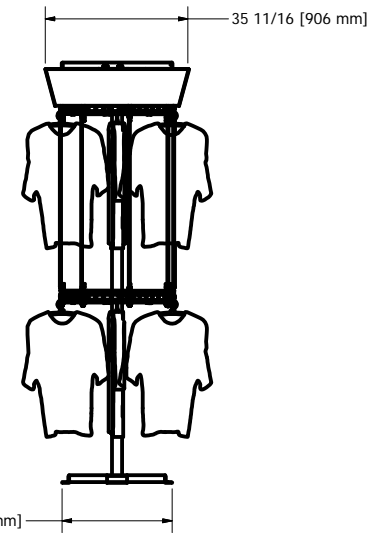
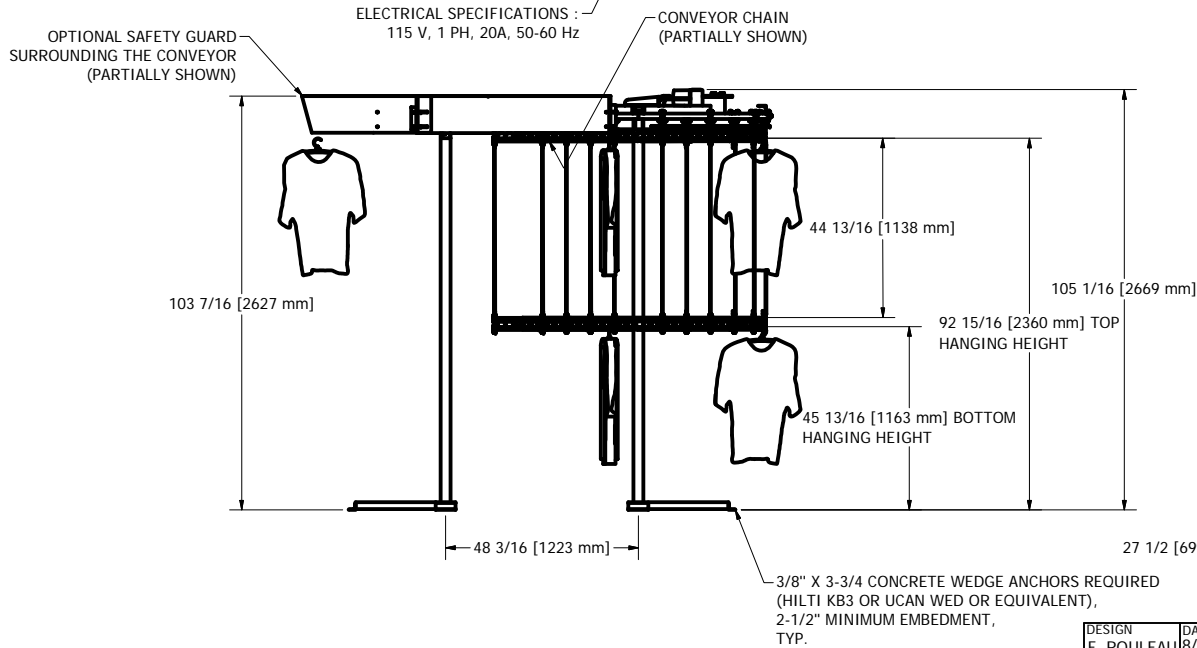
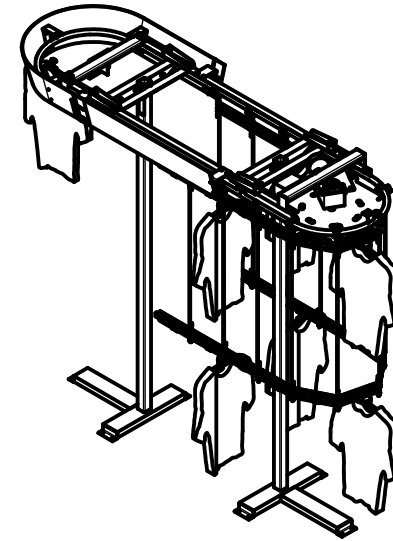
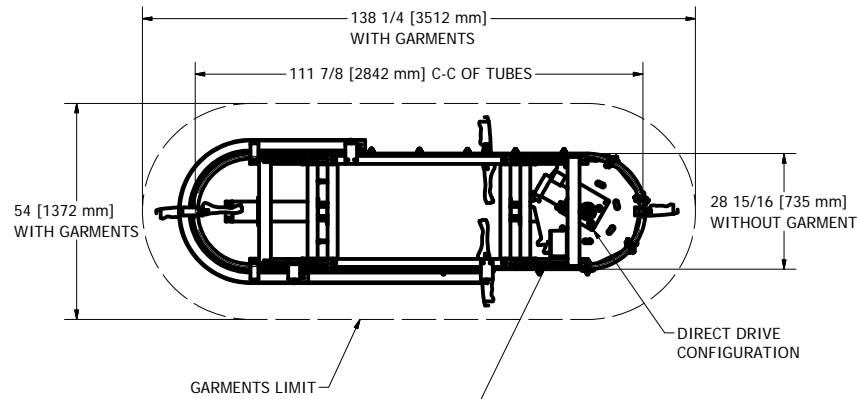


GENERAL NOTES :

CONVEYOR WEIGHT : 369 LB (without garment)
 APPROX. STORAGE CAPACITY : 504 GARMENTS
BRACING REQUIRED



DESIGN F. ROULEAU	DATE 8/21/2008
DRAWN F. ROULEAU	DATE 1/12/2010
CHECKED	DATE

GENERAL TOLERANCES	
.X	+/- .030
.XX	+/- .010
.XXX	+/- .005
FRACTION	+/- 1/16

www.planiform.com		Planiform Conveyors	
TITLE GARMENT CONVEYOR			
SIZE C	DWG NO NPF-210-DD	SCALE 1/2" = 1'-0"	REV