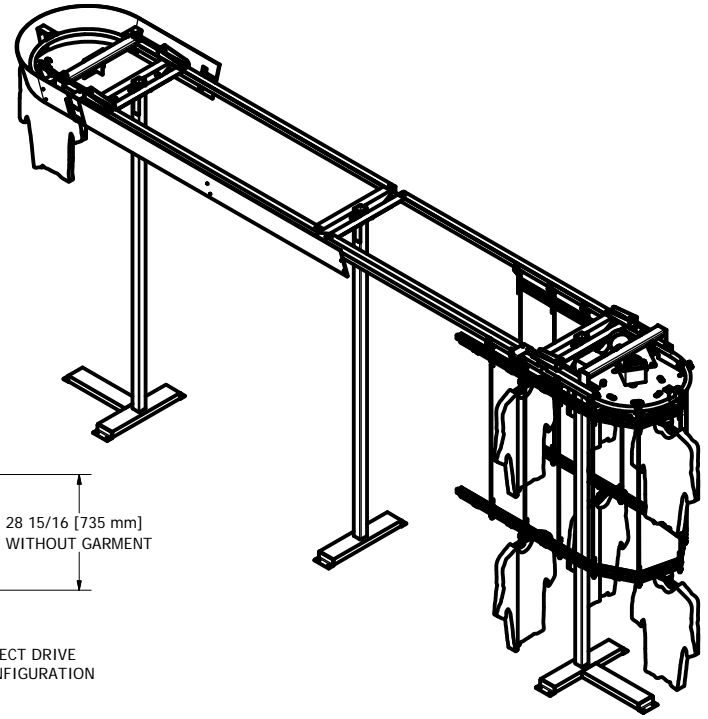
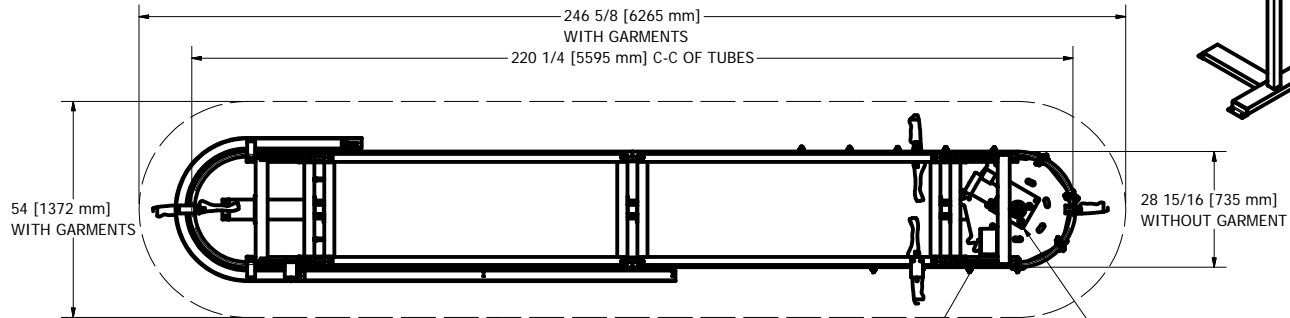


GENERAL NOTES :

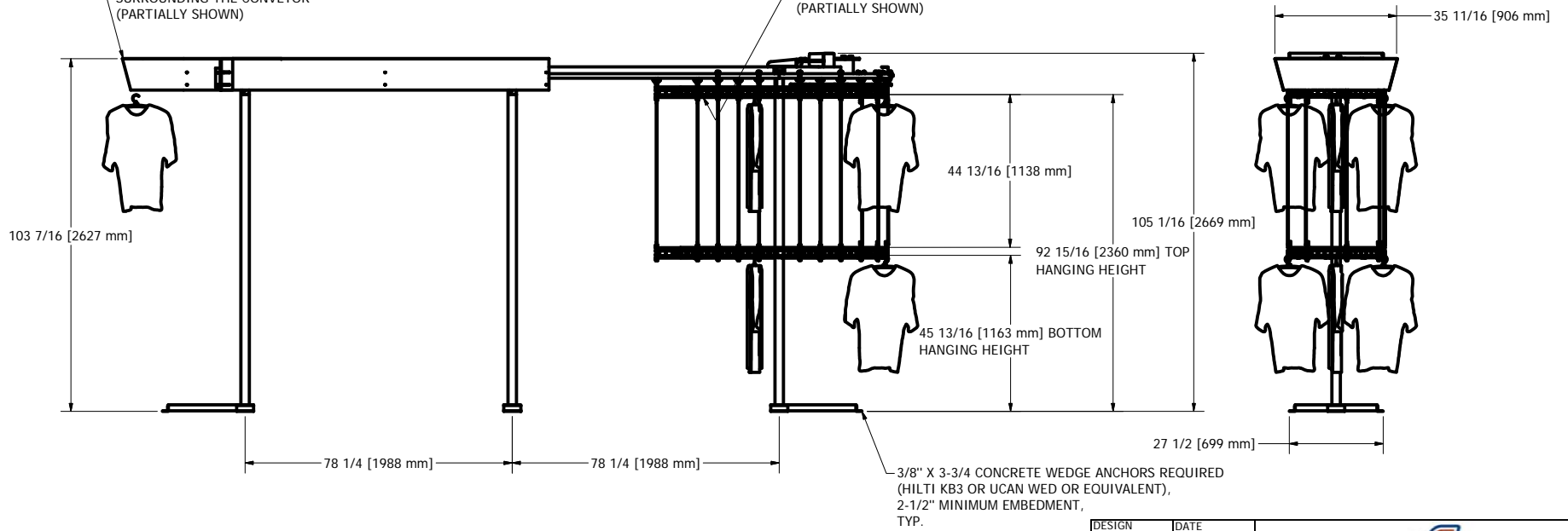
CONVEYOR WEIGHT : 551 LB (without garment)
 APPROX. STORAGE CAPACITY : 936 GARMENTS
BRACING REQUIRED



OPTIONAL SAFETY GUARD
 SURROUNDING THE CONVEYOR
 (PARTIALLY SHOWN)

ELECTRICAL SPECIFICATIONS :
 115 V, 1 PH, 20A, 50-60 Hz

CONVEYOR CHAIN
 (PARTIALLY SHOWN)



DESIGN F. ROULEAU	DATE 8/21/2008
DRAWN S. ROUS.-L.	DATE 1/15/2010
CHECKED	DATE
GENERAL TOLERANCES	
.X	+/- .030
.XX	+/- .010
.XXX	+/- .005
FRACTION	+/- 1/16

Planiform
 Conveyors

www.planiform.com

TITLE
GARMENT CONVEYOR

SIZE C	DWG NO NPF-390-DD	SCALE 1/2" = 1'-0"	REV
-----------	----------------------	-----------------------	-----