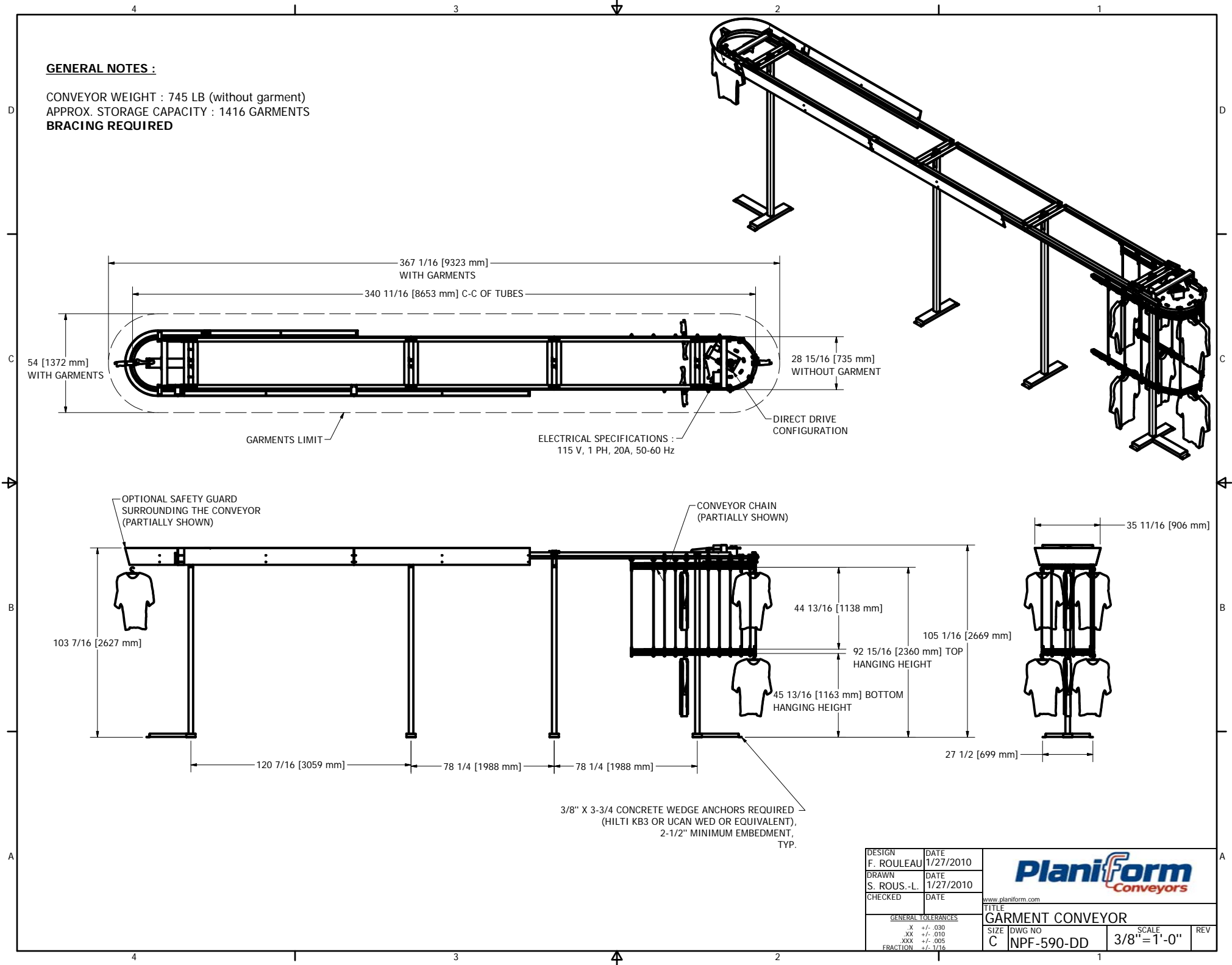


**GENERAL NOTES :**

CONVEYOR WEIGHT : 745 LB (without garment)  
 APPROX. STORAGE CAPACITY : 1416 GARMENTS  
**BRACING REQUIRED**



DESIGN F. ROULEAU	DATE 1/27/2010
DRAWN S. ROUS.-L.	DATE 1/27/2010
CHECKED	DATE

		www.planiform.com	
		TITLE GARMENT CONVEYOR	
SIZE C	DWG NO NPF-590-DD	SCALE 3/8" = 1'-0"	REV

GENERAL TOLERANCES	
.X	+/- .030
.XX	+/- .010
.XXX	+/- .005
FRACTION	+/- 1/16