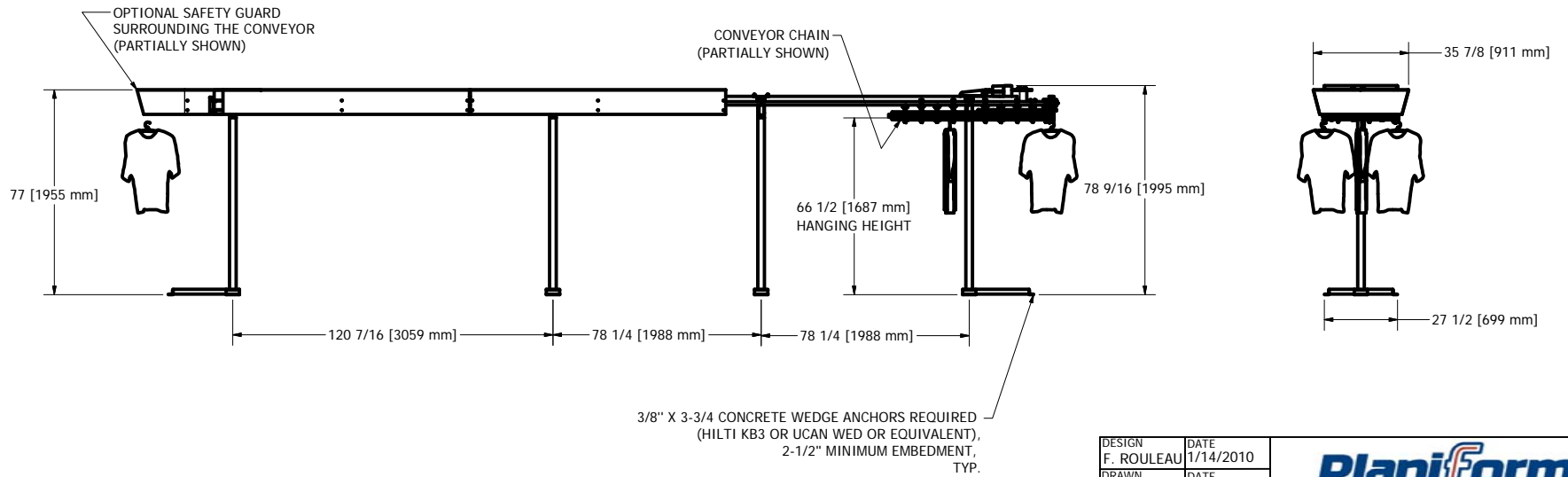
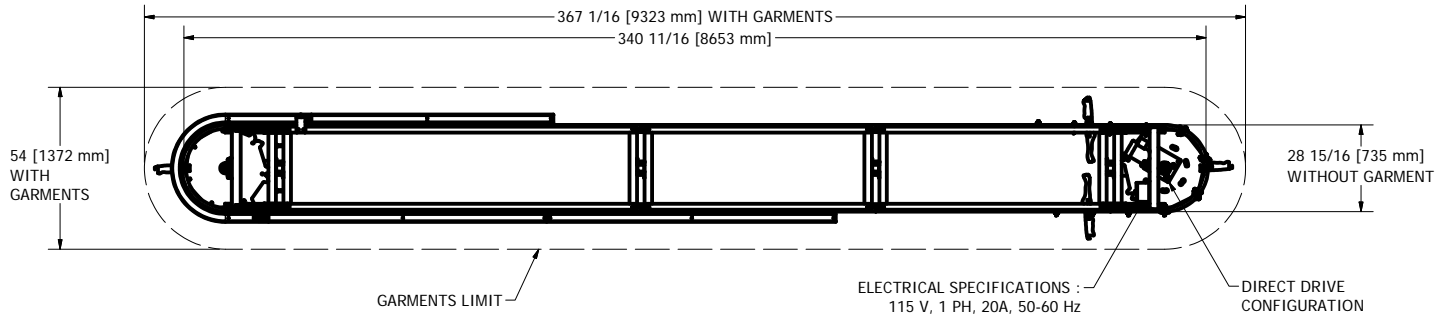
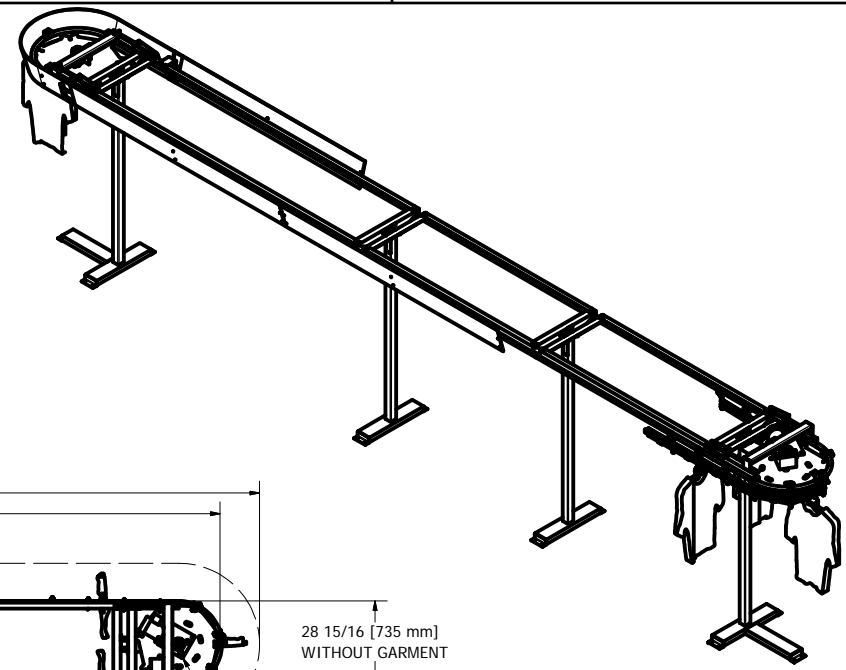


GENERAL NOTES :

CONVEYOR WEIGHT : 677 LB (without garment)
 APPROX. STORAGE CAPACITY : 708 GARMENTS



DESIGN F. ROULEAU	DATE 1/14/2010	 www.planiform.com			
DRAWN S. ROUS.-L.	DATE 1/14/2010				
CHECKED	DATE				
GENERAL TOLERANCES .X +/- .030 .XX +/- .010 .XXX +/- .005 FRACTION +/- 1/16		TITLE GARMENT CONVEYOR	SIZE DWG NO C NPF-590	SCALE 3/8" = 1'-0"	REV