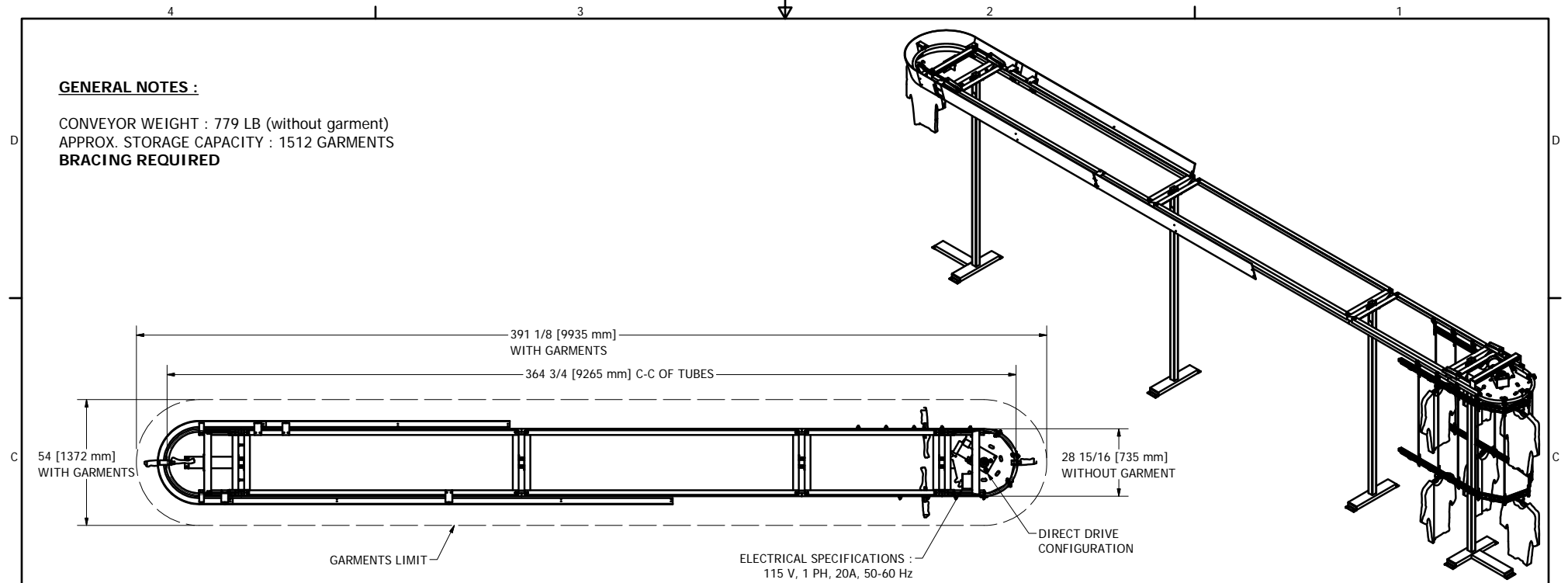
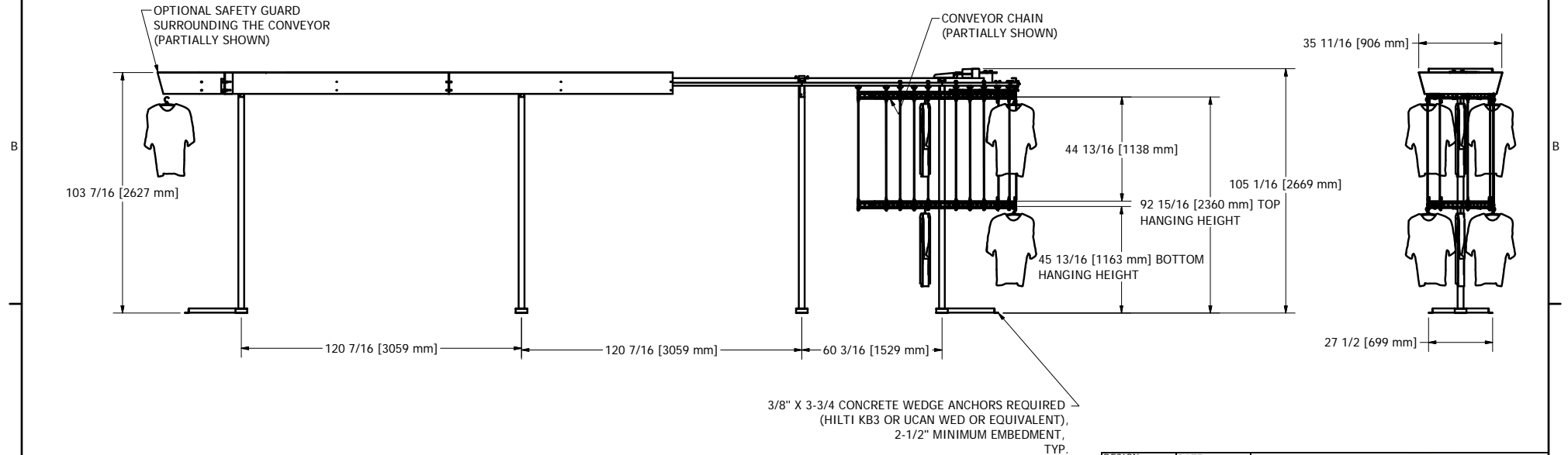


**GENERAL NOTES :**

CONVEYOR WEIGHT : 779 LB (without garment)  
 APPROX. STORAGE CAPACITY : 1512 GARMENTS  
**BRACING REQUIRED**



ELECTRICAL SPECIFICATIONS :  
 115 V, 1 PH, 20A, 50-60 Hz



3/8" X 3-3/4 CONCRETE WEDGE ANCHORS REQUIRED  
 (HILTI KB3 OR UCAN WED OR EQUIVALENT),  
 2-1/2" MINIMUM EMBEDMENT,  
 TYP.

DESIGN F. ROULEAU	DATE 1/27/2010	 www.planiform.com TITLE <b>GARMENT CONVEYOR</b>	SCALE 3/8" = 1'-0"	REV
DRAWN S. ROUS.-L.	DATE 1/27/2010		SIZE DWG NO C NPF-630-DD	
CHECKED	DATE			
GENERAL TOLERANCES				
.X	+/- .030			
.XX	+/- .010			
.XXX	+/- .005			
FRACTION	+/- 1/16			